



Nerrena Tarwin Valley Landcare Group

Action Plan 2017 –2022

“ To protect and enhance the natural assets of the area, through action, community participation, education and awareness”



This plan has been developed by the Nerrena Tarwin Valley Landcare Group (NTVLC) committee in 2017 in order to provide guidance over the next 5 years after the amalgamation of the Nerrena and Tarwin Valley Landcare Groups.

Nerrena Tarwin Valley Landcare Group c/- Secretary 70 Caithness Road Koonwarra 3954 ABN 49 910 468 320

Phone President Sue 0432 379 119 ; Secretary Jill 0419 382 379 Email ntvlandcare@gmail.com Web www.nerrenatarwinvalleylc.org.au

1. VISION

To protect and enhance the natural assets of the area, through action, community participation, education and awareness.

2. MISSION

To maintain the health and productivity of land and water in the group area.

3. INTRODUCTION

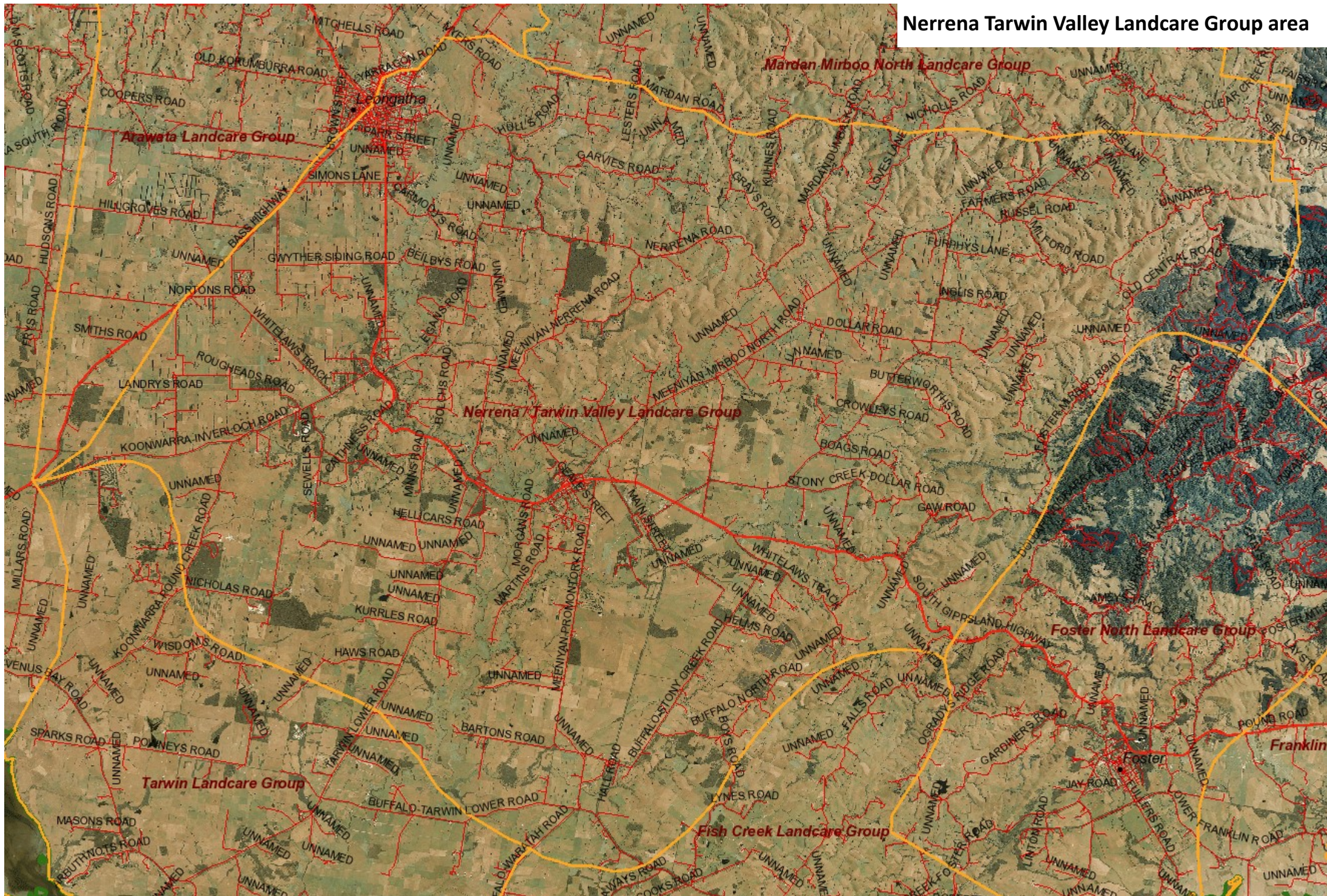
Nerrena Tarwin Valley Landcare Group (NTVLC) is a community group that exists to help landholders in the Landcare Group area develop projects and apply for funds to undertake protection and restoration of the natural environment and increase the viability of farming and food production. We work together to undertake community projects that enhance our natural environment, and support other agencies and community groups who have similar goals.

NTVLC consists of approximately twenty member families and comprises over 52,000 Ha of central South Gippsland. The group was formed from the amalgamation of the Nerrena Landcare Group and the Tarwin Valley Landcare Group in 2017. The Tarwin Valley Landcare Group was formed from the amalgamation of the Jindanook and Stony Creek Landcare Groups in 2011. The group has over 150 km of West and East branch of the Tarwin River frontage contained in its borders, and many tributaries. The Tarwin River flows into Anderson's Inlet, a wetland of National Importance and East Asian-Australasian Shorebird Site. The farm management actions landholders in the Tarwin catchment take impact the health of the Bunurong Coast. The main farming enterprises are dairy, beef production with some prime lamb and wool production.

Soils of the area are susceptible to erosion and acidification. Landslip, tunnel, gully and stream bank erosion occur within the catchment. Pest plant and animal issues are widespread in the area.

This Action Plan is a living document and will be updated annually after a review at the Group Annual General Meeting.

Nerrena Tarwin Valley Landcare Group area



OBJECTIVES

This action plan sets out the objectives of NTVLC. By achieving these objectives, NTVLC will be aligned with its mission and the aspirations of its membership. These objectives will be reported on by the NTVLC committee at the annual general meeting.

Actions included under each objective are the tasks that need to be undertaken by NTVLC (committee, partners and members) in order to achieve the group's objectives. Actions will be reviewed regularly.

NTVLC's objectives are:

1. **To promote and implement projects addressing priority natural resource management issues**
2. **To maintain the NTVLC membership and the viability of the Landcare Group**
3. **To communicate and educate – community capacity building in natural resource management**
4. **To foster community partnerships**

OBJECTIVE 1: To promote and implement projects addressing priority natural resource management issues	
AIMS	ACTIONS
<p>NTVLC will work to address:</p> <ul style="list-style-type: none"> • loss and fragmentation of native vegetation • weed invasion • feral animal impacts on native species • water quality and aquatic ecosystem health • viability and sustainability of local agriculture • community knowledge and capacity to manage natural resources 	<p>NTVLC will:</p> <ul style="list-style-type: none"> • provide training workshops and farm walks • share information through the newsletter, web page and social media • apply for grants and funding that reflect our members needs • work with natural resource management bodies and aligned community organisations to identify and fund work to increase natural assets • Provide support to members through peer to peer mentoring

OBJECTIVE 2: To maintain the NTVLC membership

AIMS	ACTIONS
<ul style="list-style-type: none"> • New members are attracted to NTVLC and existing members renew their membership • membership records are maintained • Members’ skills are recognised and utilised 	<ul style="list-style-type: none"> • The Group Secretary will with the Treasurer maintain an up to date membership list that will be shared with the South Gippsland Landcare Network and Landcare Victoria Inc, as required • membership fees will be reviewed at the group AGM • Community members are encouraged to become members by the group members • Activities are widely advertised

OBJECTIVE 3: To communicate and educate – community capacity building in natural resource management

AIMS	ACTIONS
<ul style="list-style-type: none"> • NTVLC will provide its members and the wider community with, and direct them to, knowledge to inform and inspire best practice natural resource management. • NTVLC will seek feedback from members and participants in NTVLC activities 	<p>NTVLC will:</p> <ul style="list-style-type: none"> • publish a regular newsletter, • maintain a website and social media presence, • organise regular training workshops, meeting guest speakers and farm walks • communicate through the local media where possible • Members and participants will be canvassed for their ideas and suggestions as suitable opportunities arise

OBJECTIVE 4: To foster community partnerships

AIMS	ACTIONS
<ul style="list-style-type: none">• NTVLC will create and maintain partnerships that will grow community capacity in natural resource management.	<ul style="list-style-type: none">• NTVLC will engage and work with:• South Gippsland Landcare Network• Landcare Victoria Inc• South Gippsland Shire Council• Federal and State Government agencies• Other Landcare groups• Community groups• Local schools• Landholders• Agencies involved with and/or partnered with NTVLC will be invited to NTVLC organised activities• NTVLC information (e.g. the newsletter) will be sent to representatives of these groups• Where possible NTVLC representatives or committee members will attend special events when invited, and report back to or represent members at such events• NTVLC will collaborate with relevant organisations to further common objectives

ACTION LIST—annually reviewed—2019/2020 year

PRIORITY PROJECTS	ACTIONS
<ul style="list-style-type: none"> • Blackspur Creek Wetlands Project 	<ul style="list-style-type: none"> • Acknowledge the traditional landowners and respect the human history of the area • Continue to communicate and liaise with relevant public land managers, adjoining landholders and community groups • Enhance the experience of Great Southern Rail Trail users to encourage and attract tourism • Restore biodiversity and ecological function • Facilitate ongoing research, monitoring, learning and appreciation of the natural features.
<ul style="list-style-type: none"> • Citizen Science / Bird Monitoring 	<ul style="list-style-type: none"> • Obtain training in Citizen Science and Bird Monitoring • Implement monitoring project to evaluate Landcare works • Work with Birdlife Australia to implement shared bird monitoring site
<ul style="list-style-type: none"> • Help member Landholders to obtain funding for Landcare works where the group believes the project is worthwhile and fulfils Group objectives 	<ul style="list-style-type: none"> • Committee prepares funding applications
<ul style="list-style-type: none"> • Apply for funding to extend Landcare group activities 	<ul style="list-style-type: none"> • Seek funds for projects and equipment as need arises, and as directed by Landcare group members.
<ul style="list-style-type: none"> • Work with community groups to enhance the local environment by providing advice and helping with working bees 	<ul style="list-style-type: none"> • Revegetation of the Great Southern Rail Trail • Weed control with the Meeniyan Progress Association for the bushland walk